

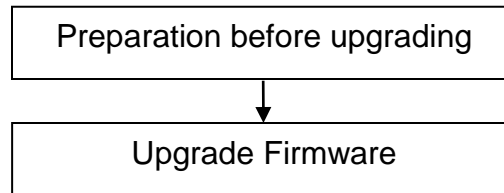
## Upgrade Guidance for HD Cameras

This firmware is for FI9803EP, FI9803P, FI9853EP, FI9851P, FI9821P V2, FI9826P V2, FI9831P V2, FI9821W V2.1 and FI9821EP.

Please check your camera model on the bottom sticker of camera. Updating with the wrong firmware could severely damage and/or brick your camera. Please make sure the firmware is correct.

### Note:

System firmware 1.5.x.11, 1.5.x.12, 1.5.x.13, App firmware 2.x.1.10, 2.x.1.11, 2.x.1.12, 2.x.1.131, 2.x.1.134, 2.x.1.143 or 2.x.2.5 **can** upgrade to this version;



### Preparation before upgrading:

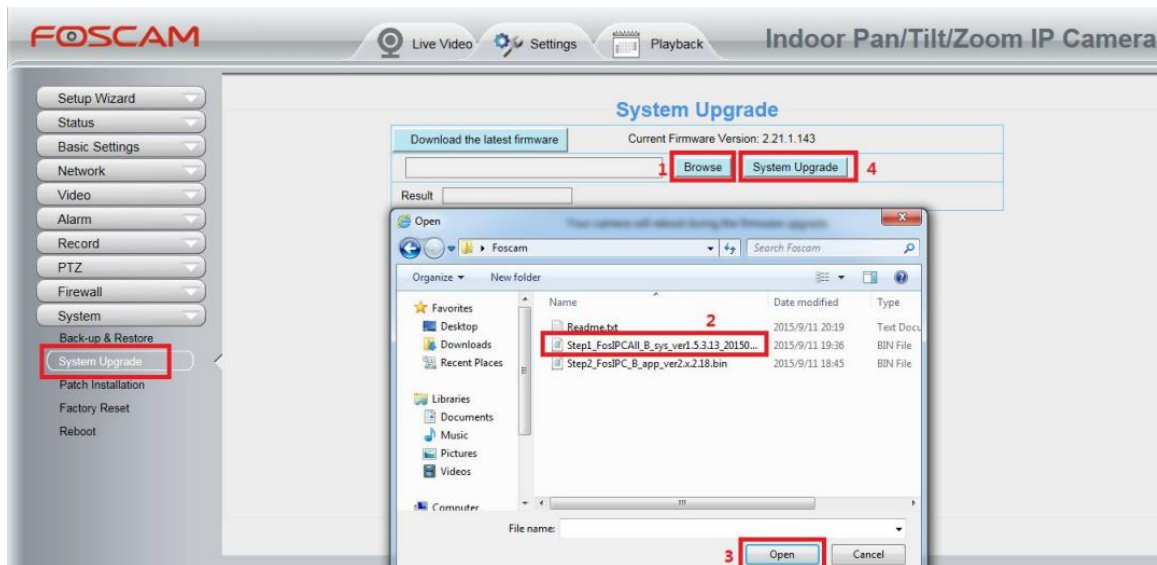
1. Please restart your camera before the upgrading;
2. Connect camera to router with an Ethernet cable before upgrading;
3. DO NOT upgrade firmware via wireless;
4. DO NOT upgrade firmware over internet, just finish it in LAN;
5. Keep power on during the upgrading;
6. Logging your camera as administrator first, upgrade firmware on web page.
7. Suggest to unplug SD card before upgrading.

### Upgrade the Firmware:

**Step1:** Login your camera, go to **Settings → System → System Upgrade**.

Click **Browse/Choose File**, find the file **Step1\_FosIPCAII\_B\_sys\_ver1.5.3.13** you've extracted in your local hard driver, then click **Open**. Camera will upgrade after you clicking **System Upgrade**.

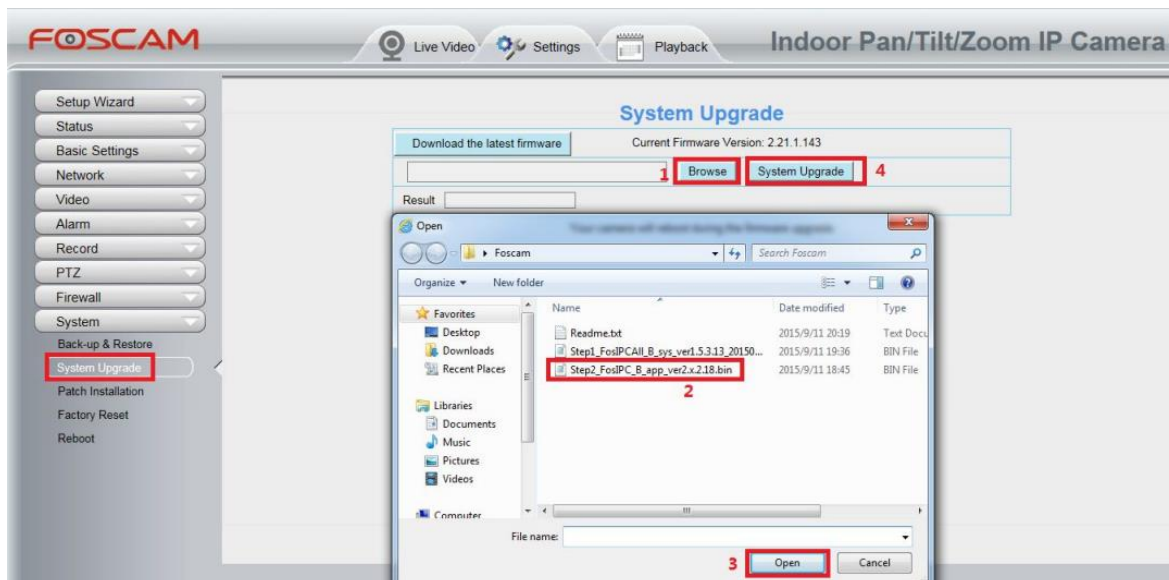
**Note:** When "Upgrading, do not power off ... Xs" pop up, camera IP will disappear from the IP Camera Tool. Then camera will reboot itself, DO NOT power off the camera, please wait till the camera IP reappear in the IP Camera Tool.



**Step 2:** Login your camera again, please go to **Settings** → **System** → **System Upgrade**.

Click **Browse/Choose File**, find the file **Step2\_FosIPC\_B\_app\_ver2.x.2.18** you've extracted in your local hard driver, then click **Open**. Camera will upgrade after you clicking **System Upgrade**.

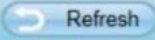
**Note:** When "Upgrading, do not power off ... Xs" pop up, camera IP will disappear from the IP Camera Tool. Then camera will reboot itself, DO NOT power off the camera, please wait till the camera IP reappear in the IP Camera Tool.



**Step 3:** Login again to check if the **System Firmware Version, Application Firmware Version** and **Plug-In Version** upgrade correctly.

**Note:**

You'd better re-install the plug-in if it did not upgraded;

Device Information	
	
Camera Model	FI9826P V2
Camera Name	FI9826PV2
Camera ID	00626E56FC0E
Camera Time	2015/09/11 20:40:16
System Firmware Version	1.5.3.15
Application Firmware Version	2.21.2.18
Plug-In Version	3.3.0.7

**Congratulations**, your camera successfully upgraded to the latest firmware!

**End**

--- by Foscam Technical Support Team